



a family building homes for families™



HOUSE & LAND

\$657,672*

RAMLEGH SPRINGS ESTATE – CLYDE NORTH

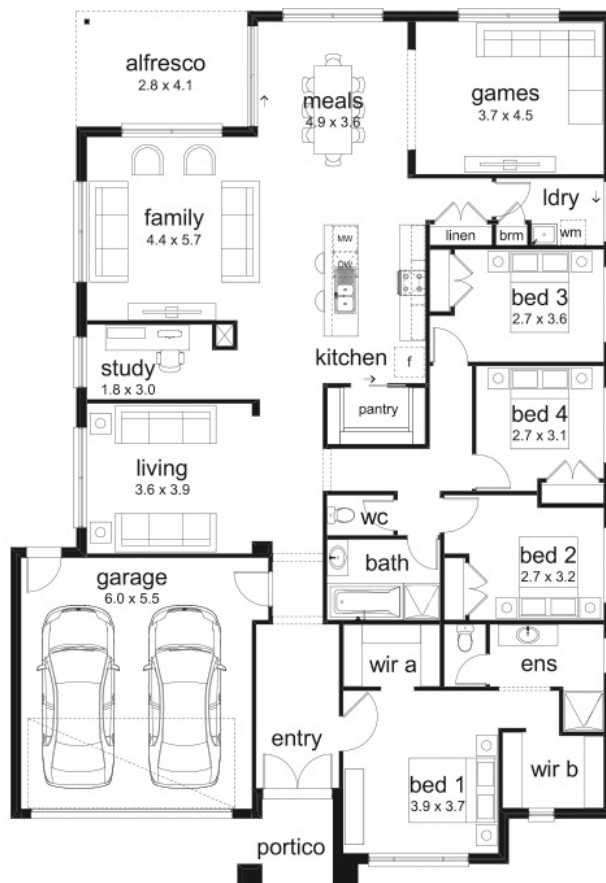
Lot 1630 Toorale Drive
Clyde North VIC 3978

🚗 4 🏠 2 🚗 2 🛋️ 3 📺 1 🏠 1

Venetia 29 Mila Facade
(Aspirations)

Home size: 28.7sq Land size: 488m²

- ✓ Aspirations Inclusions
- ✓ BAL
- ✓ Site Costs Allowance
- ✓ Recycled Water
- ✓ NBN Connection
- ✓ Sectional Garage Door
- ✓ Remote control to garage door
- ✓ Ducted Heating
- ✓ Floor Coverings
- ✓ 35 m2 of Concrete Drive and Paving



RAMLEGH
SPRINGS
ON CLYDE

Go to dennisfamily.com.au or call
1800 DENNIS for more information.

Jessica D'Argent 0418 516 207
Reference HL0023256

1. Illustrations, photographs and images of homes constructed by Dennis Family Homes: a. may include options and upgrades that are available at an additional cost; b. may include items such as landscaping and gardens, driveway, paving, decking and fencing not supplied by Dennis Family Homes, unless otherwise stated. 2. Price based on the facade type as illustrated. 3. All house and land packages are only available for the specified lot and home advertised and is only available until sold. 4. Final designs, inclusions, and options included in package may change from the information provided and may be varied by Dennis Family Homes without notice. 5. Prices published: a. are correct at the time of publishing but may change without notice after the date of printing; b. do not include stamp duty, legal fees or any other costs incurred in connection with the purchase. 6. Specific Developer of the Estate requirements are excluded unless otherwise stated. Additional costs may be incurred based on BAL zoning assessment. 9. Package offering not available in conjunction with any other offer. 10. House and land packages are subject to land availability which may change at any time without notice. Visit dennisfamily.com.au for full terms and conditions. For specific details/allowances relating to items included within this house and land package or our home your land offer, please refer to a Dennis Family Homes Sales Consultant. Dennis Family Homes Pty Ltd (ABN 83 056 254 249).