



# HOUSE & LAND

# \$661,664\*

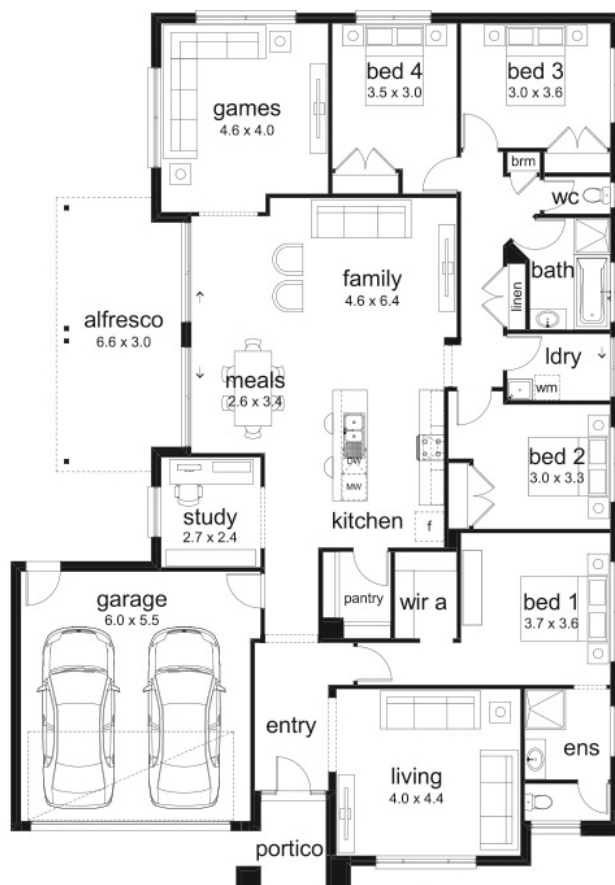
## RAMLEGH SPRINGS ESTATE – CLYDE NORTH

Lot 1630 Toorale Drive  
Clyde North VIC 3978

**Cobaine 29 Livia Facade**  
(Aspirations)

Home size: 28.66sq Land size: 488m<sup>2</sup>

- ✓ Aspirations Inclusions
- ✓ Site Costs Allowance
- ✓ Recycled Water
- ✓ NBN Connection
- ✓ Double Garage
- ✓ Sectional Garage Door
- ✓ Remote control to garage door
- ✓ Ducted Heating
- ✓ 35 m2 of Concrete Drive and Paving



RAMLEGH  
**SPRINGS**  
ON CLYDE

Go to [dennisfamily.com.au](http://dennisfamily.com.au) or call  
**1800 DENNIS** for more information.

Jessica D'Argent 0418 516 207  
Reference HL0023255